

Web

Designer: Nada Debs

Dining Table
78.75"Ø x 28.5"H (seats 10 - 12)

Inspired by a spider's web, the table base is made of welded steel.
The grains of the French oak top create an effect of sun rays.



TOP FINISH

FRENCH OAK



BROWN



DARK
BROWN



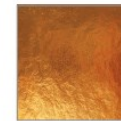
WENGE

BASE FINISH

METAL



NATURAL



GOLD LEAF



m | **MONDOO**
collection

www.mondocollection.com
info@mondocollection.com